



WATER AND DUST VACUUM CLEANER

RACAP1630

USER GUIDE

CAUTION: Read this manual before using this machine!

CONTENTS

1. SAFETY INSTRUCTIONS.....	3
2. THE PRODUCT.....	6
3. ASSEMBLY.....	7
4. OPERATION.....	8
5. MAINTENANCE.....	10
6. TROUBLESHOOTING.....	10
7. DISPOSAL.....	10
8. DECLARATION OF CONFORMITY.....	11
9. WARRANTY.....	12
10. PRODUCT FAILURE.....	13
11. WARRANTY EXCLUSIONS.....	14

1. SAFETY INSTRUCTIONS

General safety instructions for machine preparation, operation and maintenance are provided in this manual. The use should comply with the instructions. Otherwise, in case of an accident, the manufacturer shall not be held responsible.

Considerations relating to safe use

1. Do not use in areas containing inflammable liquids or gases, or in areas protected against explosion, and protected against fire.
2. Turn the switch Off and unplug before cleaning or repairing to prevent fire hazard.
3. Be careful because the hose and body can be charged with static electricity.
4. Do not step on the hose, pull on the hose when it is rolled up; if the hose is damaged, do not use it again; do not place heavy or sharp objects on the hose; do not use a high-pressure cleaner.
5. Do not let the power cord get stuck in a door, or use the wire to pull the vacuum cleaner, protect the power cord.
6. Be careful of your own safety during use, keep away from suction or moving parts.
7. Do not place the entire machine in water, do not touch the plug with wet hands or a wet towel to avoid electric shock.
8. The supply voltage must correspond to that of the device, do not use it with a voltage different from the rated voltage of the device.

9. Before suctioning water, remove the dust bag, filters and use a sponge filter.
10. Clean the tank if it contains a lot of dust.

Warning

1. This appliance can be used by children aged from 8 years and above and persons with reduced physical, sensory or mental capabilities or lack of experience and knowledge if they have been given supervision or instruction concerning use of the appliance in a safe way and understand the hazards involved. Children shall not play with the appliance. Cleaning and user maintenance shall not be made by children without supervision.
2. If the supply cord is damaged, it must be replaced by the manufacturer, its service agent or similarly qualified persons in order to avoid a hazard.
3. The plug must be removed from the socket-outlet before cleaning or maintaining the appliance.
4. Do not suck glass, iron and other sharp debris into the hose and body as this may damage the hose, filters, etc.
5. Do not suck hot, flammable, caustic or explosive substances to avoid the risk of fire and electric shock.
6. The suction of hair, paper, cement, chalk, putty powder, sticky substances can easily block the vacuum cleaner, and this could cause a fire; sucking these substances is not advisable;
7. Do not use for an extended period of time when the

air inlet is blocked, otherwise it can damage the vacuum cleaner.

8. Stop when an abnormal sound is emitted; check and clean.

9. Do not let children play with the vacuum cleaner accessories to avoid accidents.

10. If the electrical power is high, use a separate electrical panel to prevent fire.

11. Remove the plug from the power outlet when the appliance is not in use; monitor the device when it is in use.

12. Do not place the vacuum cleaner or power cord close to any heat sources to avoid fire.

13. Do not use the power cord or power plug if one of them is damaged, a professional should perform repairs;

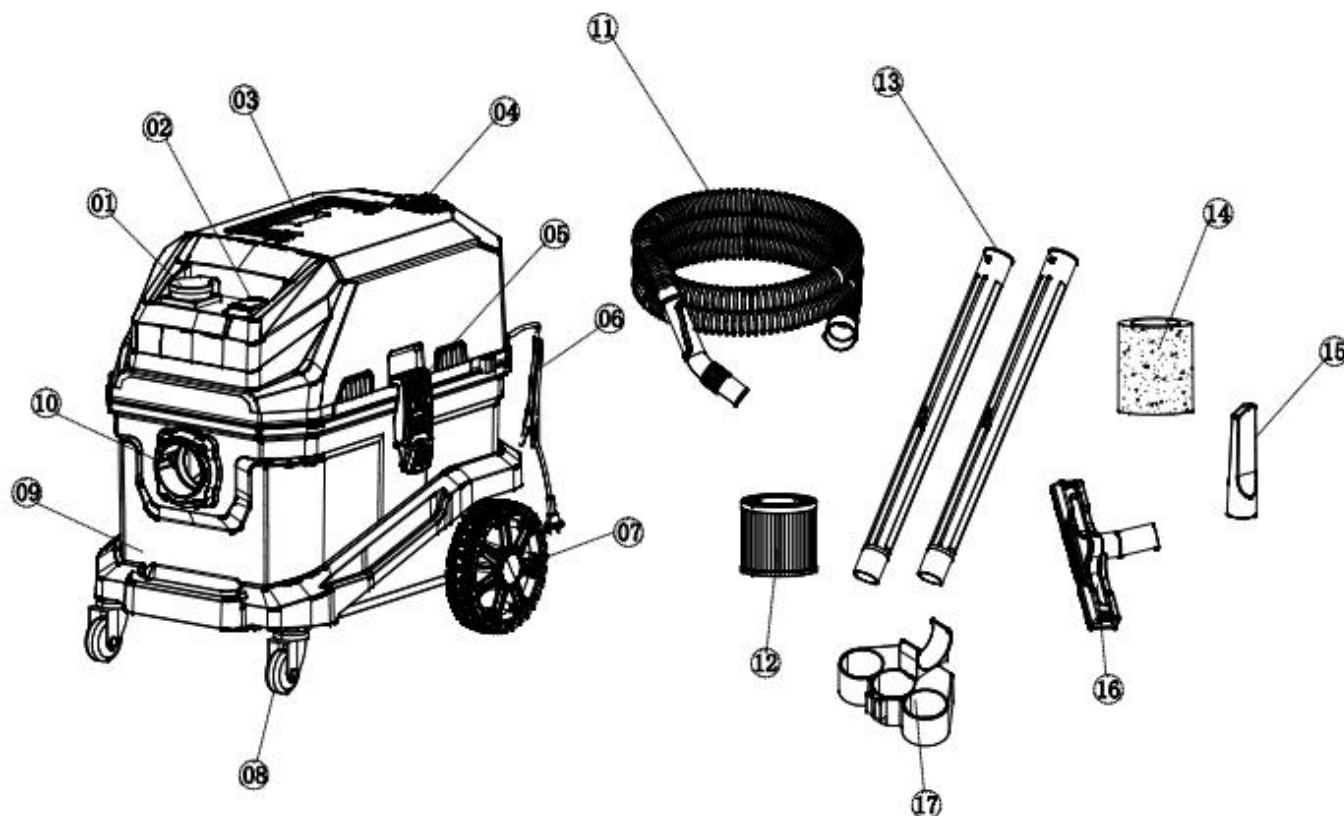
Product instructions

The vacuum cleaner has been designed to look nice, it is robust and has many functions; it is equipped with a double ventilation duct, an integrated dust bag, a three-level HEPA filtration system, and it can recover very fine dust.

The front is equipped with swivel wheels and the rear with large unidirectional wheels; easy to move; various accessories can be used for different functions; Efficient motors for both fans, higher suction, longer service life. It's the best material for cleaning in hotels, factories and other places.

2. THE PRODUCT

Main components



1	Synchronous socket	7	Directional wheels	13	Extension tubes
2	Switch	8	Universal wheels	14	Sponge filter
3	Handle	9	Tank	15	Crevice nozzle
4	Filter cleaning button	10	Air inlet	16	Wet&dry brush
5	Clasp	11	Hose	17	Accessories' holder
6	Cable	12	Cartridge filter		

Technical data

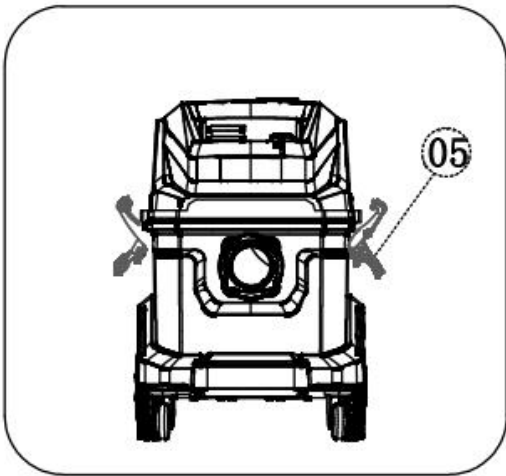
Rated voltage	220-240V~
Rated frequency	50/60Hz
Rated power	1600W, 3600W with max load of socket-outlet
Insulation class	Class I
Suction	≥ 21 KPa
Tank capacity	30L

List of contents

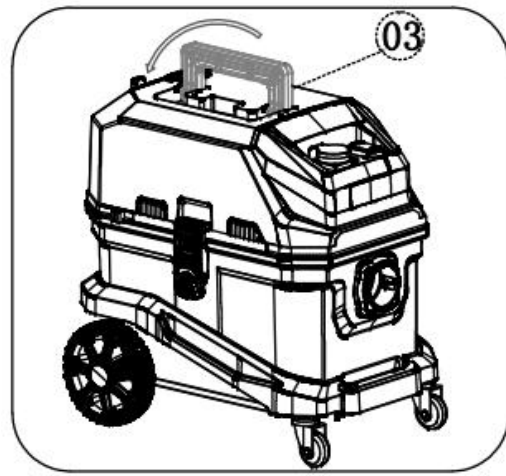
Name	Amount
Vacuum cleaner	1
Flexible hose	1
Plastic extension tube	2
Wet & dry brush	1
Crevice nozzle	1
Sponge filter	1
HEPA Filter	1

Accessories holder	1
Manuals	1

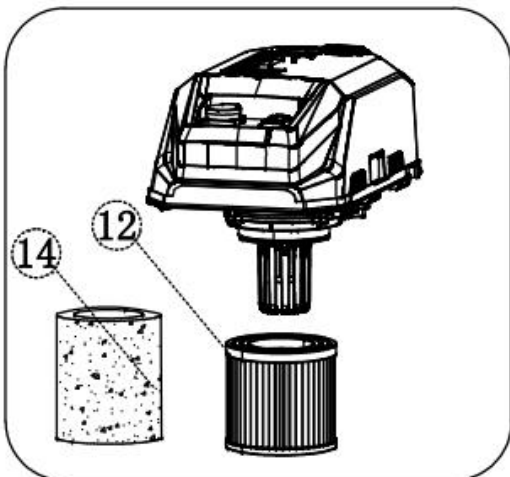
3. ASSEMBLY



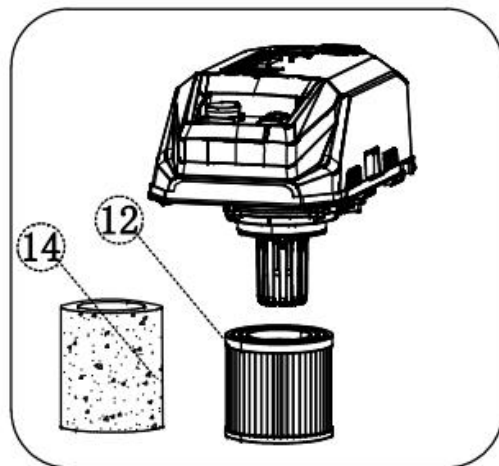
Clasp usage



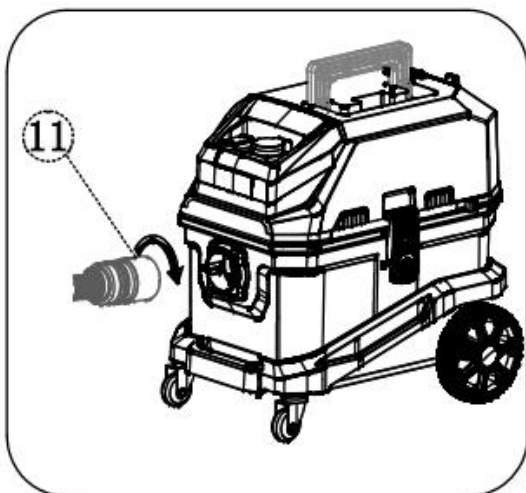
Handle usage



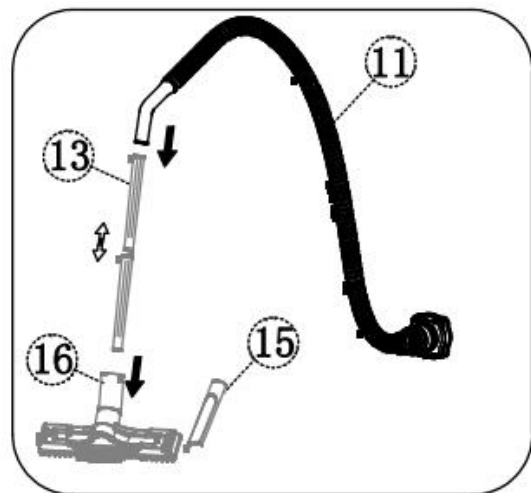
Cartridge filter assemble for dry cleaning



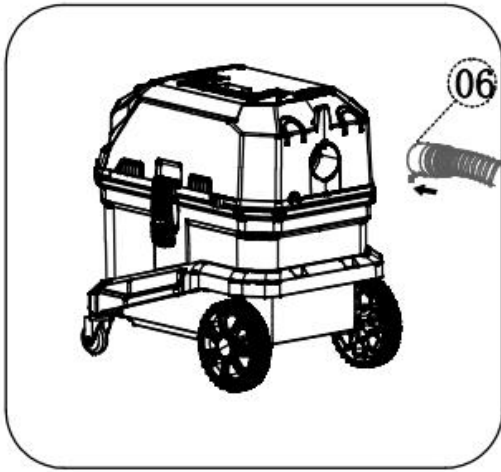
Sponge filter assemble for wet cleaning



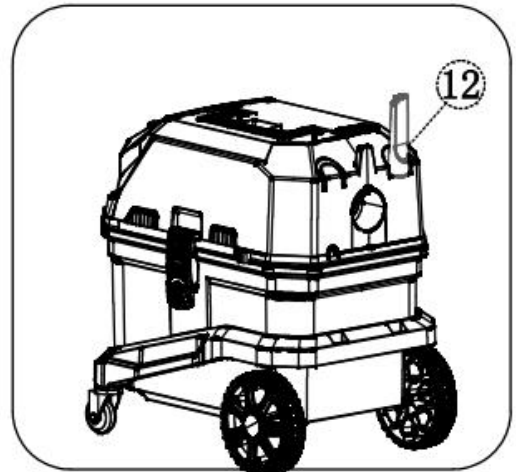
Hose assemble for cleaning



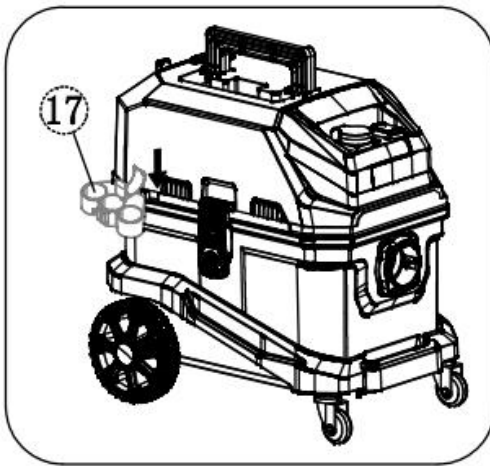
Cleaning tools assemble



Assemble hose to the back of the head for blowing function



Storage of accessories

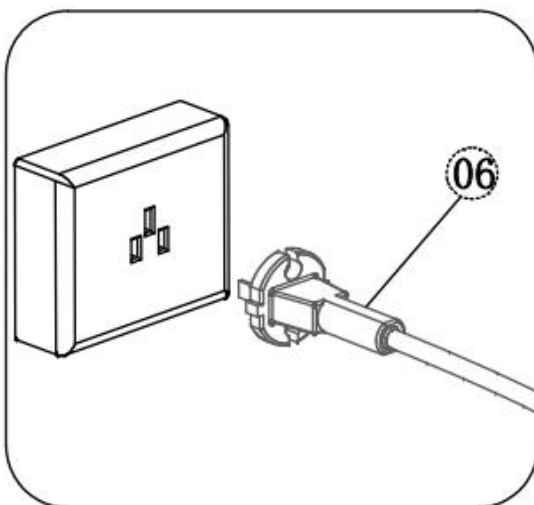


Accessories' holder usage for accessories' storage

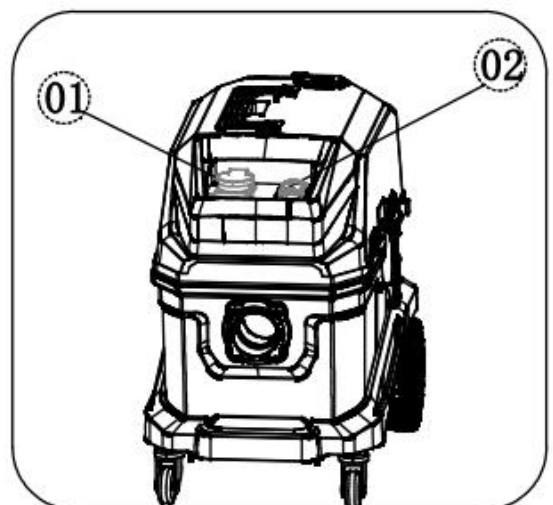


Cable storage

4. OPERATION

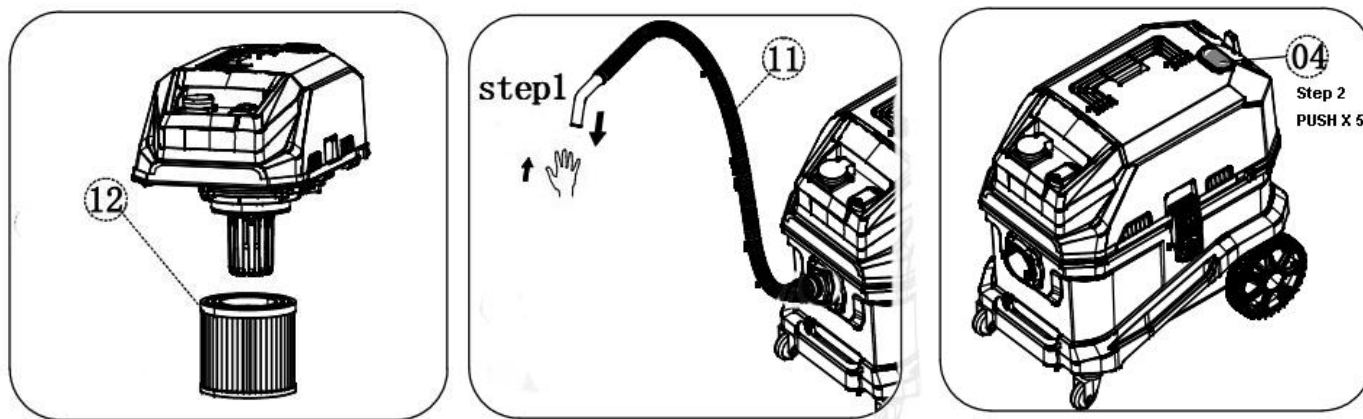


Power on



ON/OFF switch

Auto Filter cleaning Function Operation:



Before we use the machine, we need assemble relative filter accordingly.

This model is good for sucking tiny dust, and avoid the tiny dust block the filter near the head easily.

- With such filter cleaning device, it can maximize the efficiency of the usage of tank and reduce the cleaning frequency of the filter.
- Use time of filter cleaning function: when we feel dust absorption ability of the machine becomes weak or the vacuum cleaner works for some time, then we can use such cleaning function.
- Usage: when we use filter cleaning device, DO make sure to keep the machine on.

Step 1: Disconnect the hose handle from the plastic tube, as above drawing.

Step 2: Use hand with glove weared to close the hose inlet and maintain such situation before the end of filter cleaning.

Step 3: Press the cleaning button for 5 times. with an operation interval of 1s, to complete a filter cleaning operation.

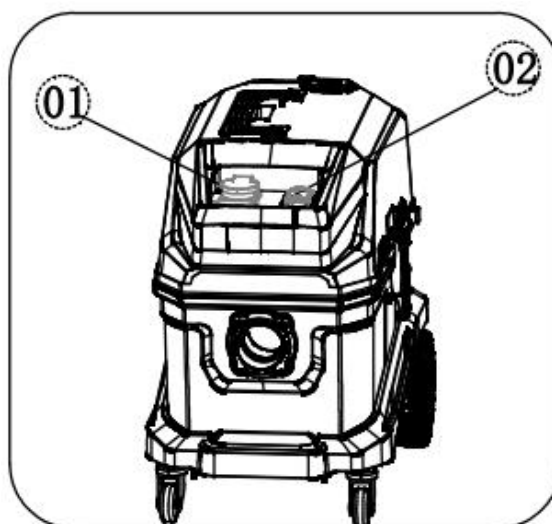
Do as above steps for cleaning of next time.

Warning: Do not wait until the suction loss of the vacuum cleaner is too large to use such filter cleaning function, or else the filter cleaning device will become very poor!

If we use such machine to suck tiny dust, we'd better assemble hepa filter to the basket of the head.

If we use the machine as normal usage for sucking some ordinary wet dust, then we can also assemble sponge filter near the head, in this case, we cannot use the filter cleaning device.

Synchronize function with socket :



- Position I: Automatic mode. when you start the power tool, the vacuum cleaner will start working synchronously; when you turn off the power tool, vacuum cleaner will stop working in 12 seconds or so.
- Position 0: The unit is switched off.
- Position II: Manual mode. The vacuum cleaner works itself.

5. MAINTENANCE

- To extend the life of the device, do not use it more than 20 minutes at a time.
- To extend the life of the device, clean the body, filter and dust bag after use.
- Wrap the power cord, store the accessories.
- Remove the dirty water after use to prevent rust or corrosion of the tank.
- Clean the surface of the vacuum cleaner with a dry cloth to avoid that water in vacuum cleaner causing a short-circuit or even fire.

6. TROUBLESHOOTING

Default	Possible reason	Handling method
Engine failure	<ol style="list-style-type: none"> 1. Check if the plug is properly wired 2. Check if the power outlet is connected 3. Check if the power switch is in the ON position 	<ol style="list-style-type: none"> 1. Place the plug back into the outlet 2. Ensure that the power outlet is turned on 3. Put the switch in the ON position
No suction	<ol style="list-style-type: none"> 1. Check if the brush, hose and telescopic tube for blockages 2. Check if the dust bag is full 3. Check if the filter is clogged 	<ol style="list-style-type: none"> 1. Unclog the blockages 2. Clean the dust bag 3. Clean the filter
Hot air outlet	<ol style="list-style-type: none"> 1. Check if the suction is normal 	<ol style="list-style-type: none"> 1. Hot air coming out of the vacuum cleaner is due to the heat conduction of the motor.
	<ol style="list-style-type: none"> 2. Check if the duration of use has exceeded 20 minutes 	<ol style="list-style-type: none"> 1. This is common, you can continue using it. 2. Leave it in stand by for 20 minutes before using it again.

7. DISPOSAL

Correct Disposal of this product



This marking indicates that this product should not be disposed with other household wastes throughout the EU. Electric and electronic equipment can be hazardous for the environment and for human health since they contain hazardous substances. To prevent possible harm to the environment or human health from uncontrolled waste disposal, recycle it responsibly to promote the sustainable reuse of material resources. To return your used device, please use the return and collection systems or contact the retailer where the product was purchased. They can take this product for environmental safe recycling.

8. DECLARATION OF CONFORMITY



SODILOG SAS
4 RUE CURIE, CS 91617 68016 COLMAR CEDEX FRANCE

States that the designated below machine :
WATER AND DUST VACUUM CLEANER
Model: RACAP1630

S/N: 20250601201-20250602168

is in conformity with the essential requirements and other relevant provisions of the applicable European Directives, based on the application of European harmonized standards.
Any unauthorized modification of the apparatus voids this declaration.

Satisfies the requirement of the Council Directives:
EC- Low voltage directive 2014/35/EU
EC Directive of Electromagnetic Compatibility 2014/30/EU
Rohs Directive 2011/65/EU & (EU) 2015/863

and conforms with the norms:

EN 60335-1:2012+A11:2014+A13:2017+A1:2019+A2:2019+A14:2019+A15:2021
EN 60335-2-2:2010+A11:2012+A1:2013
EN 62233 : 2008
EN IEC55014-1:2021
EN IEC55014-2:2021
EN IEC 61000-3-2:2019+A1:2021
EN 61000-3-3:2013+A1:2019+A2:2021

Responsible of the Technical file: Mr Patriaca
COLMAR CEDEX, 21/04/2025

Jacques Masson/PDG

9. WARRANTY

The manufacturer guarantees the product against defects in material and workmanship for a period of 2 years from the date of the original purchase. It can be extended by one year if the user subscribes to website of myswap. The warranty only applies if the product is for household use. The warranty does not cover breakdowns due to normal wear and tear.

The manufacturer agrees to replace parts identified as defective by the designated distributor. The manufacturer does not accept responsibility for the replacement of the machine, in whole or in part, and/or ensuing damage.

The warranty does not cover breakdowns due to:

- insufficient maintenance.
- abnormal assembly, adjustment or operations of the product.
- parts subject to normal wear and tear.

The warranty does not extend to:

- shipping and packaging costs.
- using the tool for a purpose other than that for which it was designed.
- the use and maintenance of the machine done in a manner not described in the user manual.

Due to our policy of continuous product improvement, we reserve the right to alter or change specifications without notice. Consequently, the product may be different from the information contained therein, but a modification will be undertaken without notice if it is recognized as an improvement of the preceding characteristic.

READ THE MANUAL CAREFULLY BEFORE USING THE MACHINE.

When ordering spare parts, please indicate the part number or code, you can find this in the spare parts list in this manual. Keep the purchase receipt; without it, the warranty is invalid. To help you with your product, we invite you to contact us by phone or via our website:

+33 (0)9.70.75.30.30

<https://services.swap-europe.com/contact>

You must create a "ticket" via the web platform.

Register or create your account.

Indicate the reference of the tool.

Choose the subject of your request.

Describe your problem.

Attach these files: invoice or sales receipt, photo of the identification plate (serial number), photo of the part you need (for example: pins on the transformer plug which are broken).



10. PRODUCT FAILURE

WHAT TO DO IF MY MACHINE BREAKS DOWN?

If you bought your product in a store:

- Make sure that your machine is complete with all accessories supplied, and clean! If this is not the case, the repairer will refuse the machine.
- Go to the store with the complete machine and with the receipt or invoice.

If you bought your product on a website:

- Make sure that your machine is complete with all accessories supplied, and clean! If this is not the case, the repairer will refuse the machine.
- Create a SWAP-Europe service ticket on the site: <https://services.swap-europe.com> When making the request on SWAP-Europe, you must attach the invoice and the photo of the nameplate (serial number).

Contact the repair station to make sure it is available before dropping off the machine.

Go to the repair station with the complete machine packed, accompanied by the purchase invoice and the station support sheet downloadable after the service request is completed on the SWAP-Europe site

Please keep your original packaging to allow for after-sales service returns or pack your machine with a similar cardboard box of the same dimensions.

For any question concerning our after-sales service you can make a request on our website <https://services.swap-europe.com>

Our hotline remains available at +33 (9) 70 75 30 30.



11. WARRANTY EXCLUSIONS

THE WARRANTY DOES NOT COVER:

- Start-up and setting up of the product.
- Damage resulting from normal wear and tear of the product.
- Damage resulting from improper use of the product.
- Damage resulting from assembly or start-up not in accordance with the user manual.
- Periodic and standard maintenance events.
- Actions of modification and dismantling that directly void the warranty.
- Products whose original authentication marking (brand, serial number) has been degraded, altered or withdrawn.
- Replacement of consumables.
- The use of non-original parts.
- Breakage of parts following impacts or projections.
- Accessories breakdowns.
- Defects and their consequences linked to any external cause.
- Loss of components and loss due to insufficient screwing.
- Cutting components and any damage related to the loosening of parts.
- Overload or overheating.
- Poor power supply quality: faulty voltage, voltage error, etc.
- Damages resulting from the deprivation of enjoyment of the product during the time necessary for repairs and more generally the costs related to the immobilization of the product.
- The costs of a second opinion established by a third party following an estimate by a SWAP-Europe repair station
- The use of a product which would show a defect or a breakage which was not the subject of an immediate report and/or repair with the services of SWAP-Europe.
- Deterioration linked to transport and storage*.

* In accordance with transport legislation, damage related to transport must be declared to carriers within 48 hours maximum after observation by registered letter with acknowledgement of receipt. This document is a supplement to your notice, a non-exhaustive list.

Attention: all orders must be checked in the presence of the delivery person. In case of refusal by the delivery person, it you must simply refuse the delivery and notify your refusal.

Reminder: the reserves do not exclude the notification by registered letter with acknowledgement within 72 hours.

Information:

Thermal devices must be wintered each season (service available on the SWAP-Europe site). Batteries must be charged before being stored.



SODILOG SAS
4 RUE CURIE, CS 91617 68016 COLMAR CEDEX FRANCE
Made in PRC